

AZtecLiveOne with XploreCompact 30 and 65 for TTM



Routine EDS Analysis System

The AZtecLiveOne system combines the simple-to-use yet powerful AZtecLiveOne software and the proven stability and accuracy of 30mm² XploreCompact EDS Detector.

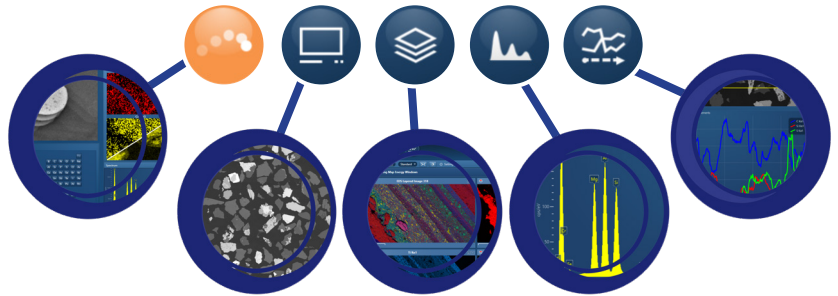
Includes all the tools required to help you quickly analyse and characterise your sample with confidence and ease. Unique Tru-Q technology ensures that elements are automatically identified and quantified to new levels of accuracy.

AZtecLiveOne Software	
Image	✓ (Res up to 2K)
Spectrum Acquisition	✓
X-Ray Mapping	✓ (Res up to 1K)
X-Ray LineScanning	✓ (up to 8K points)
Live Spectrum Viewer	✓
TruMap	Optional
Live Mapping	Optional
Drift Correction	Optional

Hardware - XploreCompact 30 X1 electronics	
Detector	XploreCompact 30 and 65
Sensor Size	30 and 65 mm ²
Detection Range	B(5) to Cf(98)
Resolution	Mn Ka <129eV@50,000cps
Max. input count rate	>1,000,000 cps
Quantitative count rate	>100,000 cps
Controller	X1 (1 Detector, 2 images)

AZtecLiveOne Software

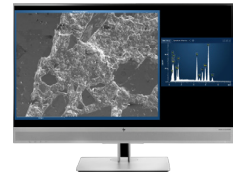
AZtecLiveOne is designed for users with little or no EDS knowledge or just for those users in a rush. The interface is equipped with simple navigation steps, which are designed to help you perform tasks quickly and easily:



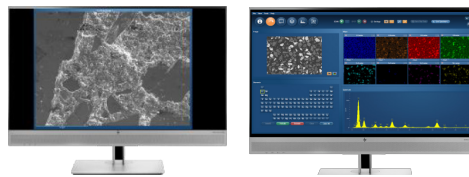
Live | Image | Mapping | Point&ID | LineScanning

Live Chemical Analysis – A completely new way of investigating your sample

Users can navigate their sample using the TTM software while watching the *Live Spectrum Viewer*.

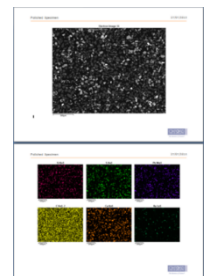


Single Monitor – Live spectrum and TTM interface



Dual Monitor – Full AZtecLiveOne interface and TTM interface

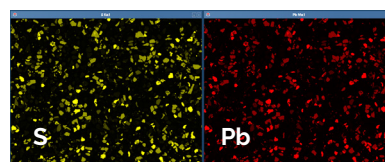
Reporting – Smart content selector means reports can be generated in seconds



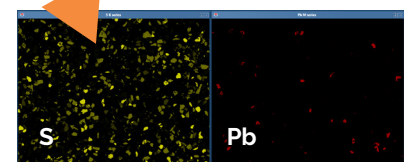
Optional Software

TruMap – Overlap and background correction helps you see the true distribution of elements in your sample

With normal mapping S and Pb maps look identical, but with TruMap technology the real S and Pb distributions are revealed



Standard X-Ray maps



Overlap corrected maps



DESCRIPTION	AZtecOne	AZtecLiveOne	AZtecLiveLite
Analyser Navigator/Step (Spectrum Acquisition)	✓	✓	✓
Point&ID Navigator/Step (Spectrum Acquisition)	✓	✓	✓
Mapping Navigator/Step (Map Acquisition)	✓	✓	✓
LineScan Navigator/Step (LineScan Acquisition)	✓	✓	✓
LiveSpectrum for AZtecLiveOne with Live Spectrum Viewer (Live chemical analysis)	×	✓	×
LiveMapping for AZtecLiveOne (Live Chemical Imaging)	×	Option	×
AZtecOne AutoLock (Drift correction for AZtecLiveOne software)	×	Option	×
AZtecLiveStep (Live Chemical Imaging)	×	×	✓
AZtecLiveTrace (Records locations visited during 'Live' analysis)	×	×	Option
Image Registration (use imported image to navigate in microscope) – also works on SEM images	×	×	Option
AZtec Standardisation Manager (Input users standards)	×	×	✓
Report Template Editor (Create your own report templates)	×	×	✓
Custom Mode (Configurable user interface)	×	×	Option
AZtec AutoLayer (Automatically combine electron image and X-ray maps in a single image)	×	×	Option
AZtec TruMap (Overlap and background corrected mapping)	Option	Option	Option
AZtec AutoLock (Drift correction for AZtecLive Software)	×	×	Option
AZtec AutoPhaseMap (Automatic phase analysis)	×	×	Option
AZtec QuantMap (Quantitative Mapping and Linescanning)	×	×	Option
AZtec Large Area Mapping	×	×	Option
AZtec MapQueue (Automated point map acquisitions)	×	×	Option
AZtecFeature Analysis (Automated Particle Analysis software)	×	×	Option
AZtecSteel (automated analysis and classification of non-metallic inclusions in steel - Requires MS Office and AZtecFeature)	×	×	Option
AZtecGSR Package (Gun Shot Residue analysis – requires AZtecFeature)	×	×	Option
AZtecClean (Measure the Technical cleanliness of components to industrial standards - requires AZtecFeature)	×	×	Option
AZtecAM (Automated analysis of particles used in Additive Manufacturing – requires AZtecFeature)	×	×	Option
AZtecMineral - automates the acquisition of EDS data and morphological information from geological materials. The accompanying post-processing application, GrainAnalyser2, includes the option to classify against a database containing >4000 mineral compositions.	×	×	Option
AZtec LayerProbe (Calculates thicknesses and compositions of multi-layer structures)	×	×	Option
AZtecLiveOne for AZtecLive (Add AZtecLiveOne functionality to an AZtecLive installation)	×	×	Option

Visit nano.oxinst.com

The materials presented here are summary in nature, subject to change, and intended for general information only. Performances are configuration dependent. Additional details are available. Oxford Instruments NanoAnalysis is certified to ISO9001, ISO14001 and ISO45001. AZtec, Symmetry, Ultim, Tru-I and Tru-Q are Registered Trademarks of Oxford Instruments plc, all other trademarks acknowledged. Patents: US11195692B2, US9671354B2.

© Oxford Instruments plc, 2024. All rights reserved. LITR511906-01

